

NOTICE OF SPECIAL MEETING

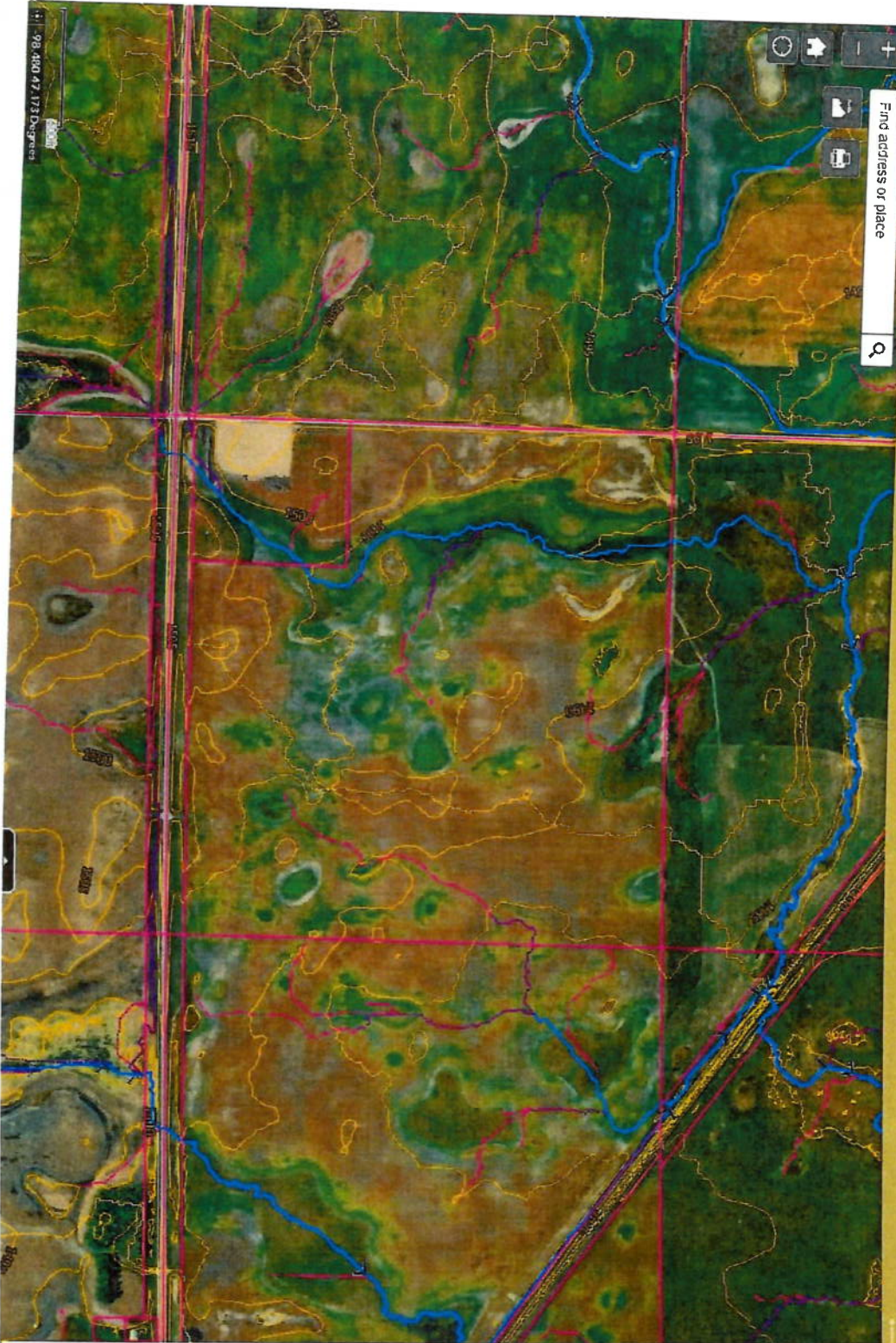
A Special Meeting of the Stutsman County Water Resource Board will be on **WEDNESDAY, MARCH 5, 2025, AT 10:30 A.M.** for a site visit, meeting in the parking lot of 1692 95th Avenue Southeast, Wimbledon, North Dakota 58492.

The matter to be considered is the following:

**W-659-COMPLAINT OF UNAUTHORIZED DRAINAGE SUBMITTED
BY JERALD ORN IN THE SOUTH HALF OF SECTION 25/143/62,
STUTSMAN COUNTY, NORTH DAKOTA**

Notice to landowners and operators: Prior written approval of any project involving any drainage or obstruction of water must be secured from the Water Resource Board. This approval is in addition to any approval required by USDA, FSA (formerly ASCS), NRCS (formerly SCS), or any other state or federal agency.

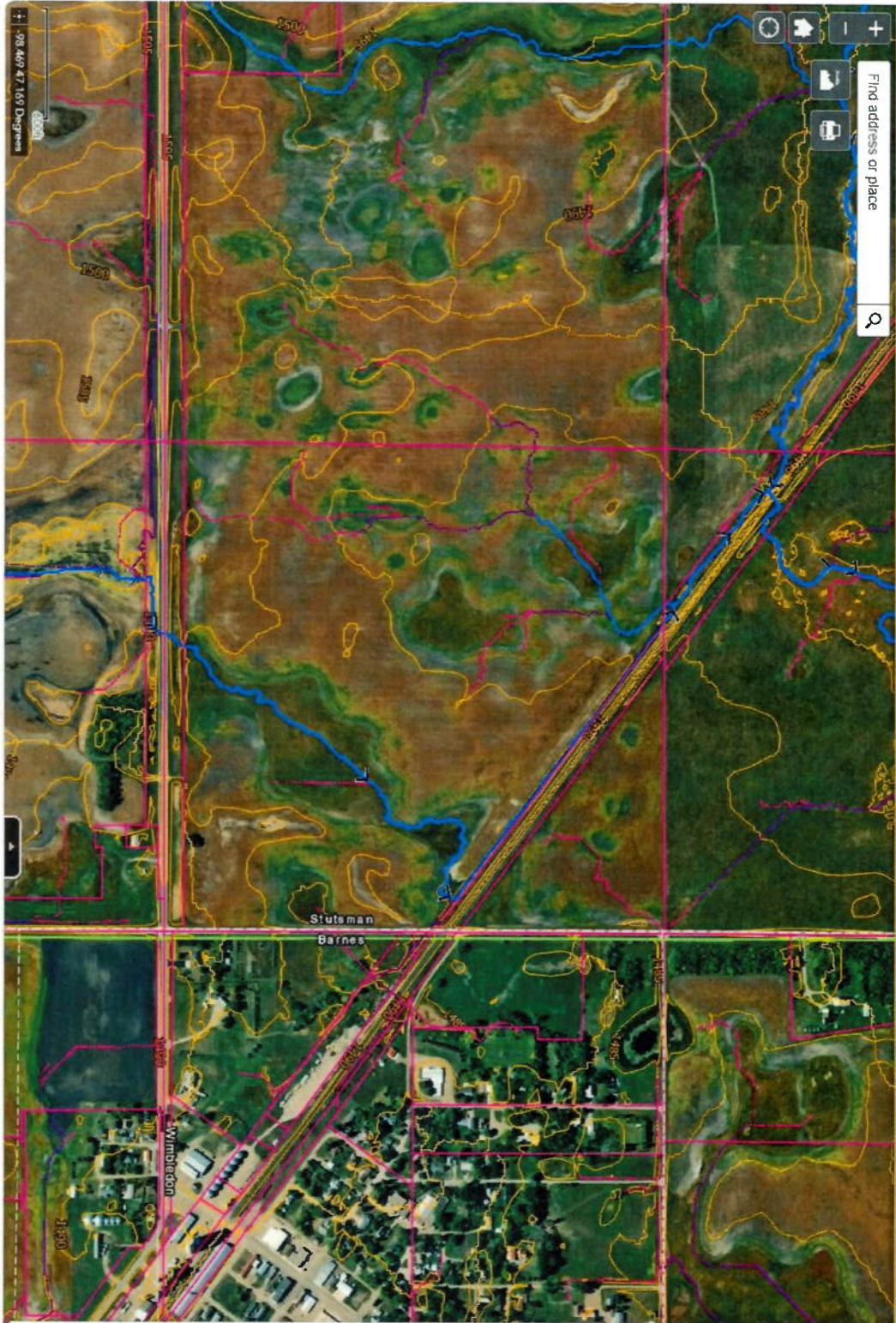
Find address or place



- MNV Parcels
- Shyerme
- Watershed Hydrologic Boundary
- Field Scale Flow Paths By Drainage Area
- Non-contributing basins/depressions (100yr)
- Non-contributing drainage areas (100yr)
- Catchments
- FloodPolygons_Libon
- FloodPolygons_Fargo
- NWPS River Gauges
- Flood Extents
- Red River Watershed
- MN Cornour (1h)
- ND Cornours (1h)
- P.L.S.S (Township & Sections)
- Resorable Wetland - Lidar (MN)
- Red River DEM
- Hillshade
- Weather Radar
- NOKHSC_Snow_Analysis

98.480 47.173 Degrees

Find address or place



- Layer List
- MN Parcels
 - Shyenne
 - Watershed Hydrologic Boundary
 - Watershed Flow Paths By Drainage Area
 - Field Scale Flow Paths By Drainage Area
 - Non-contributing basins/depressions (100yr)
 - Non-contributing drainage areas (100yr)
 - Catchments
 - FloodPolygons_Lisbon
 - FloodPolygons_Fargo
 - NWRFS River Gauges
 - Flood Extents
 - Red River Watershed
 - MN Contours (1ft)
 - ND Contours (1ft)
 - PLSS (Township & Sections)
 - Restorable Wetland - Lidar (MN)
 - Red River DEM
 - Hillshade
 - Weather Radar
 - NOHRSC_Sew_Analysis